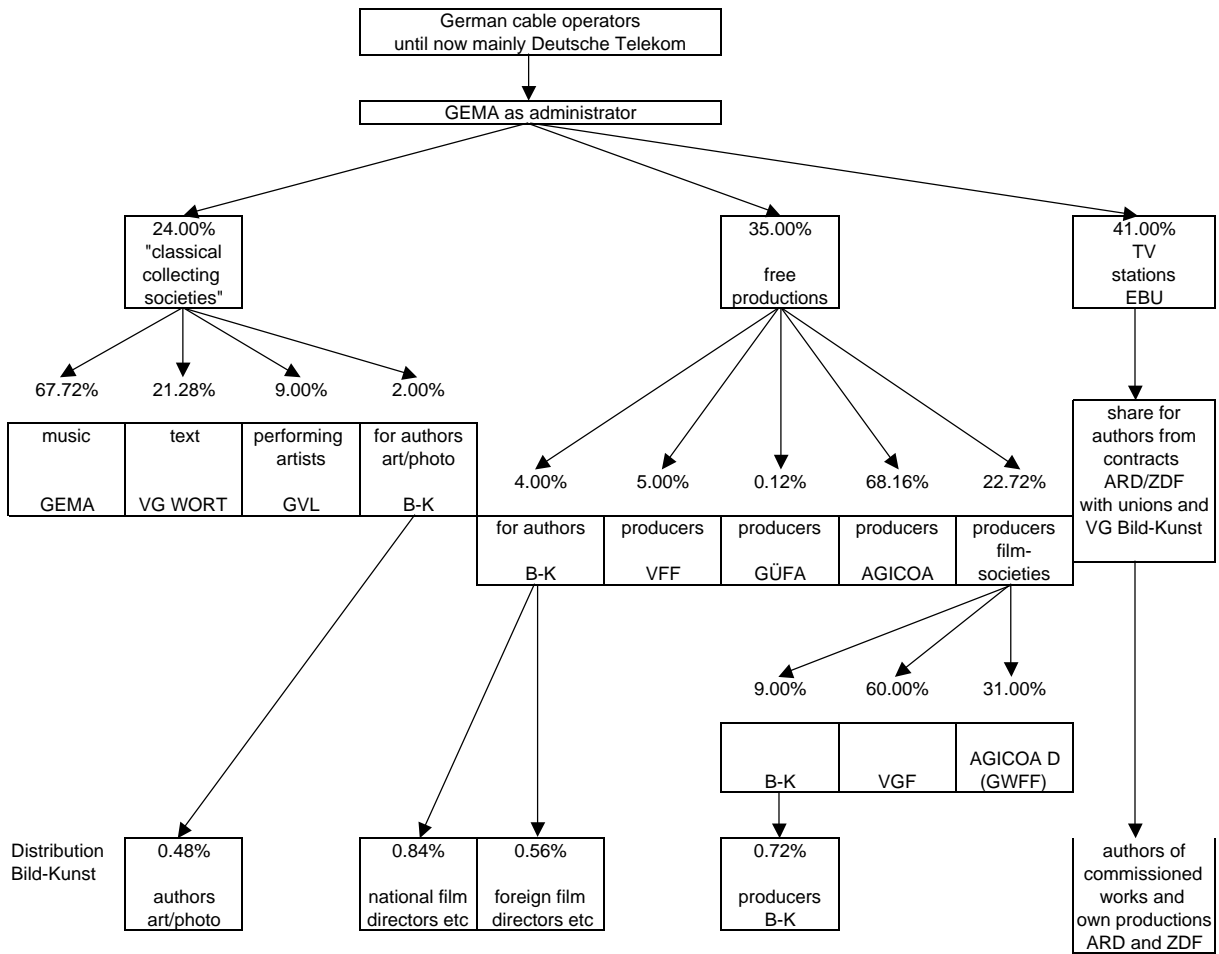


Cable remuneration



Cable remuneration

TV				40% share authors	
EBU	EBU without D	5.00%			2.05%
41%	D public broadcasting	90.00%			36.90%
	GVL			33.33%	4.92%
	VG WORT			33.33%	4.92%
	Bild-Kunst			33.33%	4.92%
	D private TV broadcasting	5.00%			2.05%
		100.00%			41.00%
					41.00%

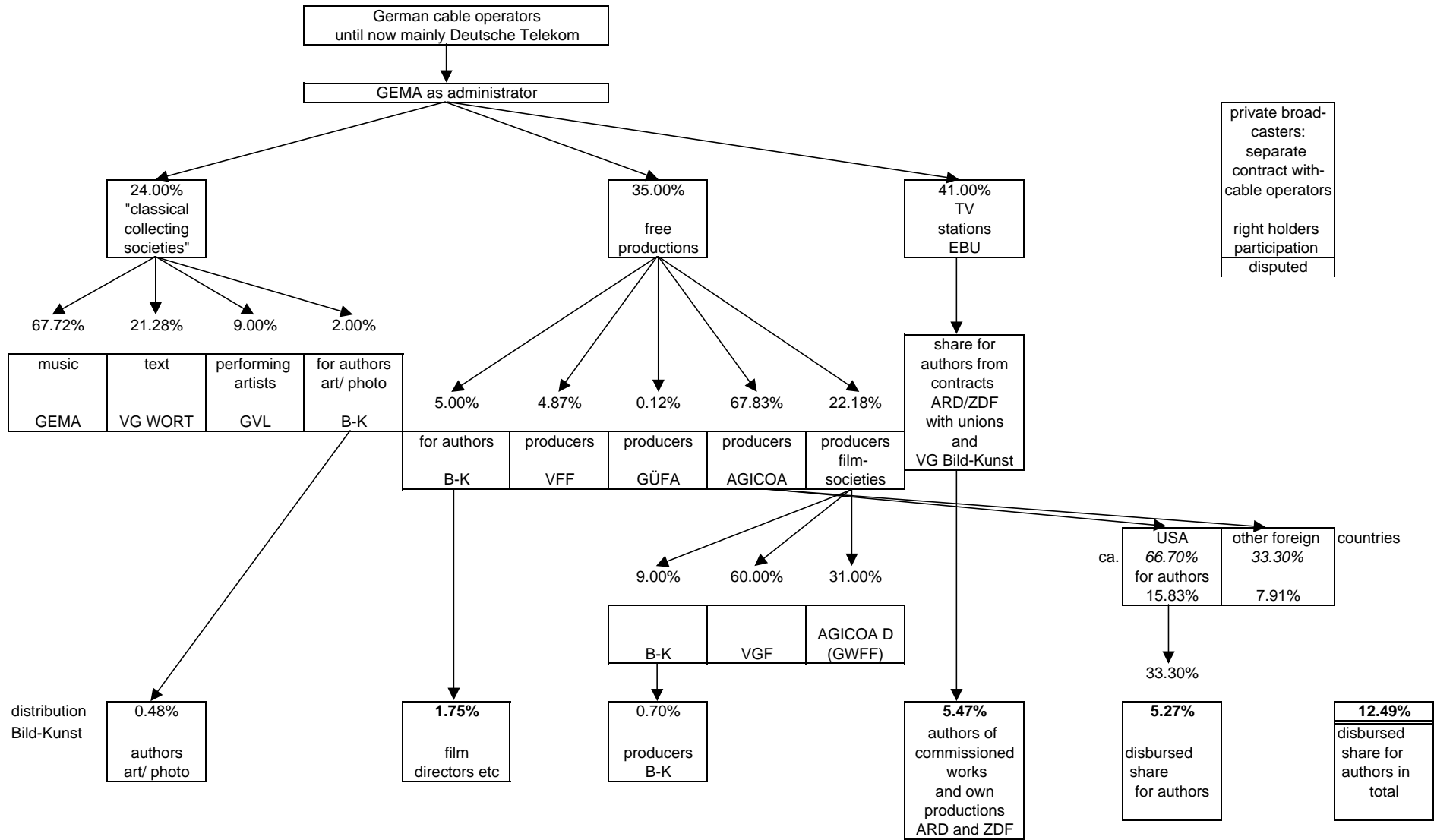
film collecting societies	Bild-Kunst	authors	4.00%			1.40%
35%	VFF	producers	5.00%			1.75%
	GÜFA	producers	0.12%			0.04%
	AGICOA	producers	68.16%			23.86%
	VGF/GWFF/B-K	producers	22.72%	VGF	60.00%	4.77%
				GWFF	31.00%	2.47%
				Bild-Kunst	9.00%	0.72%
			100.00%			35.00%
						35.00%

classical collecting societies	GEMA		67.72%			16.25%
24%	WORT		21.28%			5.11%
	GVL		9.00%			2.16%
	Bild-Kunst	Kunst-Foto	2.00%			0.48%
			100.00%			24.00%
						24.00%

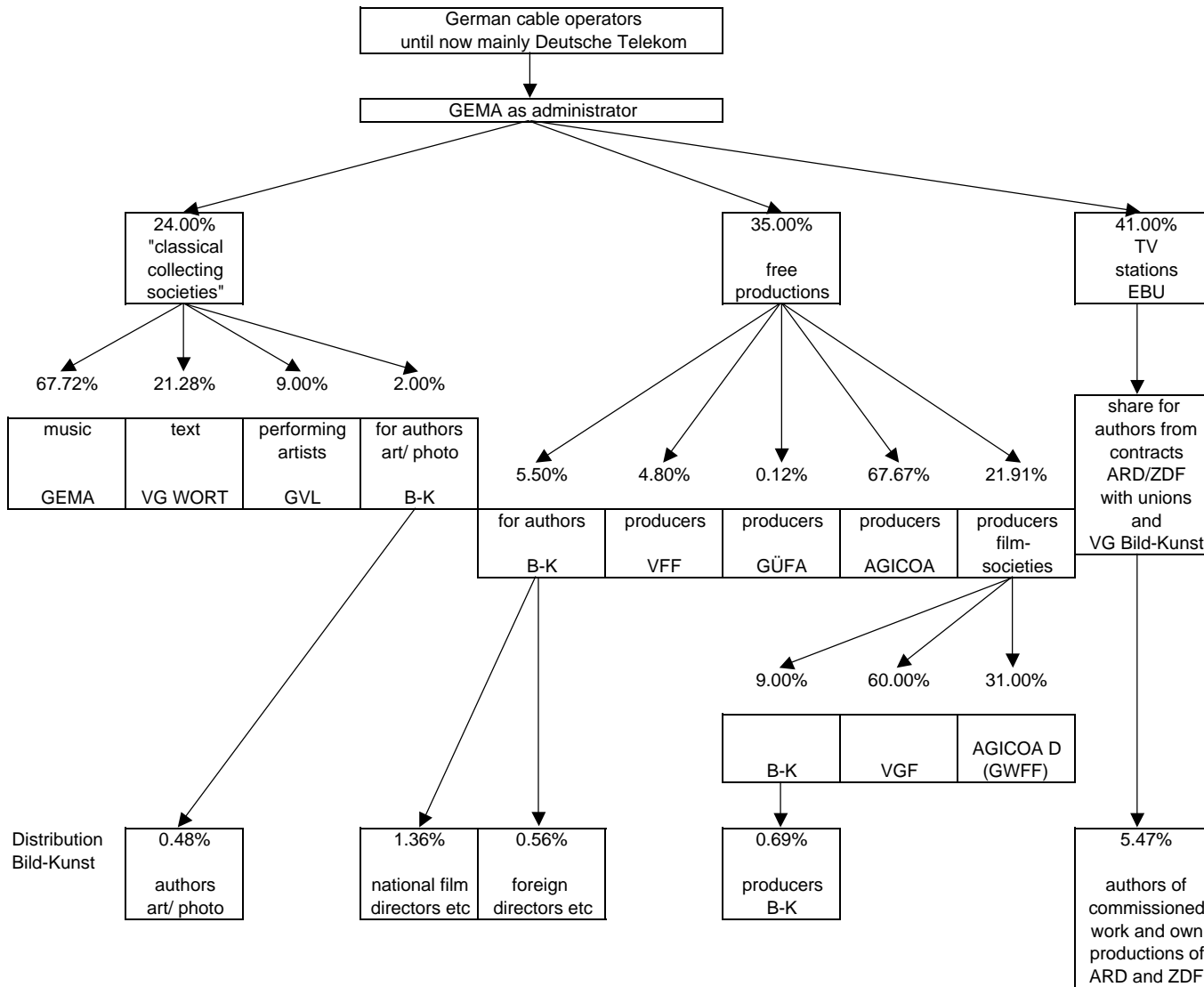
Summary

EBU without D	2.05%	EBU without D	2.05%
D public TV	22.14%	D public TV	22.14%
GVL	4.92%	GVL	7.08%
VG WORT	4.92%	VG WORT	10.03%
Bild-Kunst	4.92%	Bild-Kunst	7.52%
D private TV	2.05%	D private TV	2.05%
Bild-Kunst	1.40%	VFF	1.75%
VFF	1.75%	GÜFA	0.04%
GÜFA	0.04%	AGICOA	23.86%
AGICOA	23.86%	VGF	4.77%
VGF	4.77%	GWFF	2.47%
GWFF	2.47%	GEMA	16.25%
Bild-Kunst	0.72%		<u>100.00%</u>
GEMA	16.25%		
WORT	5.11%		
GVL	2.16%		
Bild-Kunst	0.48%		
	<u>100.00%</u>		

Cable remuneration 2003 - 2004



Cable remuneration 2005 - 2006



Distribution ZWF without VFF						share for each	
	Cable					collecting society	
	in total	internal	share for each			for cable	distribution in
		distribution	collecting society			in total	ZWF
until 2002							
"class." collecting societies	24%	2.00%	art/ photo	100%	Bild-Kunst	0.48%	1.22%
free productions	35%	4.00%	authors	100%	Bild-Kunst	1.40%	3.57%
		0.12%		100%	Güfa	0.04%	0.11%
		68.16%		100%	AGICOA	23.86%	60.86%
		22.72%	film-societies	60%	VGf	4.77%	12.17%
				31%	GWFF	2.47%	6.29%
				9%	Bild-Kunst	0.72%	1.83%
TV (EBU)	41%	40.00%	Arge Kabel	33.33%	Bild-Kunst	5.47%	13.95%
	100%					39.20%	100.00%
2003/2004							
"class." collect. societies	24%	2.00%	art/ photo	100%	Bild-Kunst	0.48%	1.22%
free productions	35%	5.00%	authors	100%	Bild-Kunst	1.75%	4.44%
		0.12%		100%	Güfa	0.04%	0.11%
		67.83%		100%	AGICOA	23.74%	60.21%
		22.18%	film-societies	60%	VGf	4.77%	12.10%
				31%	GWFF	2.47%	6.25%
				9%	Bild-Kunst	0.72%	1.82%
TV (EBU)	41%	40.00%	Arge Kabel	33.33%	Bild-Kunst	5.47%	13.86%
	100%					39.43%	100.00%
2005/2006							
"class." collect. societies	24%	2.00%	art/ photo	100%	Bild-Kunst	0.48%	1.21%
free productions	35%	5.50%	authors	100%	Bild-Kunst	1.93%	4.87%
		0.12%		100%	Güfa	0.04%	0.11%
		67.67%		100%	AGICOA	23.68%	59.89%
		21.91%	film-societies	60%	VGf	4.77%	12.06%
				31%	GWFF	2.47%	6.23%
				9%	Bild-Kunst	0.72%	1.81%
TV (EBU)	41%	40.00%	Arge Kabel	33.33%	Bild-Kunst	5.47%	13.82%
	100%					39.55%	100.00%
Summary							
			until 2002	2003/2004	2005/2006		
Bild-Kunst			20.57%	21.33%	21.71%		
Güfa			0.11%	0.11%	0.11%		
VGf			12.17%	12.10%	12.06%		
Agicoa			60.86%	60.21%	59.89%		
GWFF			6.29%	6.25%	6.23%		
			100.00%	100.00%	100.00%		

Cable distribution							1/21/2005
	<i>Cable</i>			share per		<i>share per collect.</i>	
	<i>in total</i>	internal		collecting		society for	distribution in
		distribution		society		<i>cable in total</i>	ZWF
until 2002							
"class." collect.	24%	2.00%	art/ photo	100%	Bild-Kunst	0.48%	1.17%
societies							
free productions	35%	4.00%	authors	100%	Bild-Kunst	1.40%	3.42%
		0.12%		100%	Güfa	0.04%	0.10%
		5.00%		100%	VFF	1.75%	4.27%
		68.16%		100%	AGICOA	23.86%	58.26%
		22.72%	film-societies	60%	VGF	4.77%	11.65%
				31%	GWFF	2.47%	6.02%
				9%	Bild-Kunst	0.72%	1.75%
TV (EBU)	41%	40.00%	Arge Kabel	33.33%	Bild-Kunst	5.47%	13.35%
	<u>100%</u>					<u>40.95%</u>	<u>100.00%</u>
2003/2004							
"class." collect.	24%	2.00%	art/ photo	100%	Bild-Kunst	0.48%	1.17%
societies							
free productions	35%	5.00%	authors	100%	Bild-Kunst	1.75%	4.25%
		0.12%		100%	Güfa	0.04%	0.10%
		4.87%		100%	VFF	1.70%	4.14%
		67.83%		100%	AGICOA	23.74%	57.71%
		22.18%	film-societies	60%	VGF	4.77%	11.60%
				31%	GWFF	2.47%	5.99%
				9%	Bild-Kunst	0.72%	1.74%
TV (EBU)	41%	40.00%	Arge Kabel	33.33%	Bild-Kunst	5.47%	13.29%
	<u>100%</u>					<u>41.14%</u>	<u>100.00%</u>
2005/2006							
"class." collect.	24%	2.00%	art/ photo	100%	Bild-Kunst	0.48%	1.16%
societies							
free productions	35%	5.50%	authors	100%	Bild-Kunst	1.93%	4.67%
		0.12%		100%	Güfa	0.04%	0.10%
		4.80%		100%	VFF	1.68%	4.07%
		67.67%		100%	AGICOA	23.68%	57.45%
		21.91%	film-societies	60%	VGF	4.77%	11.57%
				31%	GWFF	2.47%	5.98%
				9%	Bild-Kunst	0.72%	1.74%
TV (EBU)	41%	40.00%	Arge Kabel	33.33%	Bild-Kunst	5.47%	13.26%
	<u>100%</u>					<u>41.23%</u>	<u>100.00%</u>
Summary							
			until 2002	2003/2004	2005/2006		
Bild-Kunst			19.69%	20.45%	20.83%		
Güfa			0.10%	0.10%	0.10%		
VFF			4.27%	4.14%	4.07%		
VGF			11.65%	11.60%	11.57%		
Agicoa			58.26%	57.71%	57.45%		
GWFF			6.02%	5.99%	5.98%		
			100.00%	100.00%	100.00%		